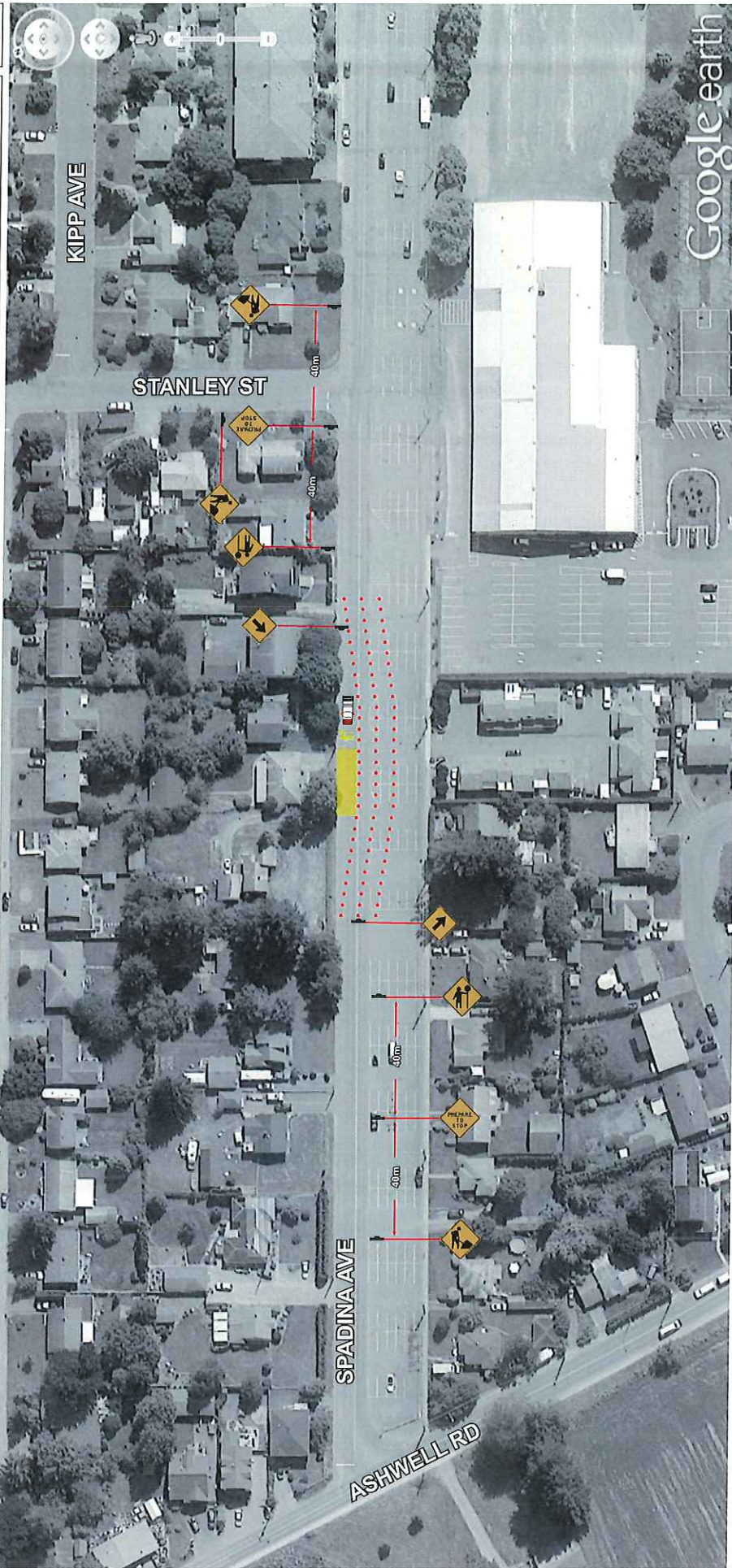


Traffic Control Plan - 45455 Spadina Ave - Service Connection - K&R Excavating



Streetwise TRAFFIC CONTROLLERS INC. TRAFFIC PLAN	Contactor Name: K&R Excavating Job Description: Connecting Services Contactor Contact: _____ Phone: _____ Email: _____ Traffic Supervisor Contact: Angelia Fox Phone: 604-858-7730 Email: Angelia@StreetwiseTraffic.ca Traffic Plan Contact: Tehjay Fox Phone: 604-799-6750 Email: Tehjay@StreetwiseTraffic.ca
TRAFFIC CONTROL PLAN DATE OF LAST REVISION 2016-10-24	Date: Oct 31st to Nov 4th SHEET # Sheet 1 of 1

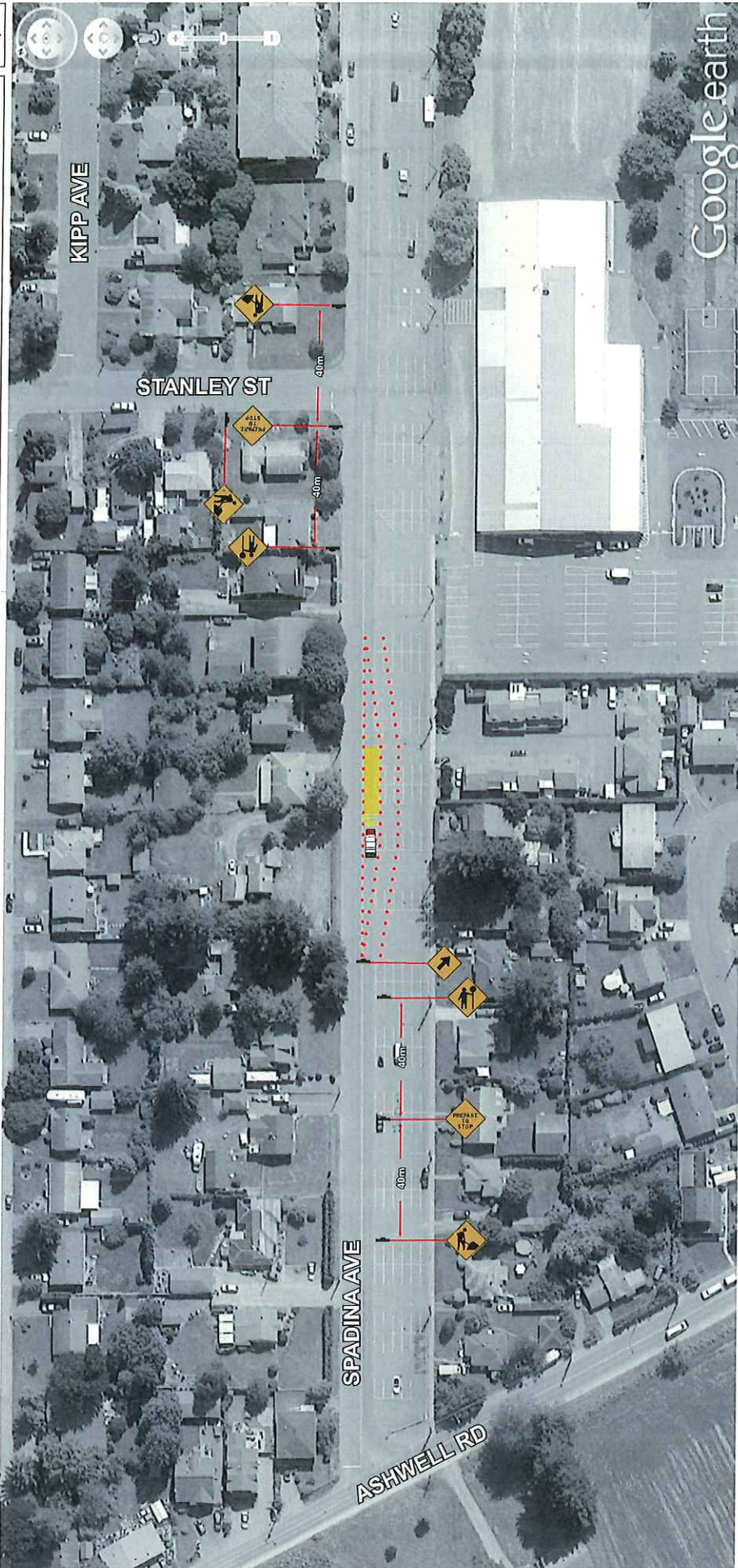
LEGEND	
	TRAFFIC CONTROL PERSONNEL
	SIGN STAND (TRIPOD)
	SIGN STAND (WINDMASTER)
	SIGN FLAGS
	CLASS 1 BARRICADE
	WORKZONE
	TRAFFIC BARREL
	TUBULAR MARKER-TYPE D
	TRAFFIC CONTROL VEHICLE
	FLASHING ARROW BOARD (FAB)
	EXISTING BUS STOP CLOSED
	RELOCATED BUS STOP

GENERAL NOTES

- All traffic control shall conform to the TCM and the latest catalogue for Standard Traffic Signs
- Signs shown are representations of signs only and the MUTI Construction Sign Catalogue should be used for disabled sign design
- Signs shall be placed in advance of the work zone and shall be maintained at all times and are the minimum except as otherwise indicated
- All permanent signs shall be placed in advance of the work zone
- Active Work Zones and Hazards shall be delineated to protect workers and the traveling public
- Maximum distance between cones/delineator/barrel should be 10m
- Diurnal markers and signs will be double based and well secured during windy conditions
- Diurnal markers and signs will be double based and well secured during windy conditions
- These pages are best printed on a 16x11 page size



Traffic Control Plan - 45455 Spadina Ave - Service Connection - K&R Excavating



Streetwise TRAFFIC CONTROLLERS OF TRAFFIC PLAN	TRAFFIC CONTROL PLAN DATE OF LAST REVISION 2016-10-24	
	Contractor Name: K&R Excavating	Date: Oct 31st to Nov 4th
Job Description: Connecting Services	SHEET # Sheet 1 of 1	
Traffic Supervisor Contact: Angelia Fox Phone: 604-858-7730 Email: Angelia@StreetwiseTraffic.ca	Contractor Contact: Tehjay Fox Phone: 604-998-6750 Email: Tehjay@StreetwiseTraffic.ca	

LEGEND	
	TRAFFIC CONTROL PERSONNEL
	SIGN STAND (TRIPOD)
	SIGN STAND (WINDMASTER)
	SIGN FLAGS
	CLASS 1 BARRICADE
	WORKZONE
	TRAFFIC BARREL
	TUBULAR MARKER - TYPE D
	TRAFFIC CONTROL VEHICLE
	FLASHING ARROW BOARD (FAB)
	EXISTING BUS STOP - CLOSED
	RELOCATED BUS STOP

GENERAL NOTES

- All traffic control shall conform to the TCM and the latest catalogue for Standard Traffic Signs.
- Signs shown are representations of signs only and the MOTI Construction Sign Catalogue should be used for detailed sign design.
- Dimensions shown are in meters and are the minimums except as otherwise indicated.
- Signage that will conflict with this site will be covered or removed while the works are in effect.
- Active Work Zones shall be marked with tubular markers and the travelling public.
- Maximum distance between canal/inbarbarol should be 10m.
- Tubular markers and signs will be double based and well secured during windy conditions.
- Distances may be adjusted due to urban block length.
- * These pages are best printed on a standard (11x17) page size.

Traffic Control Plan - 45455 Spadina Ave - Service Connection - K&R Excavating



	TRAFFIC CONTROL PLAN DATE OF LAST REVISION 2016-10-24
	Contractor Name: K&R Excavating Job Description: Connecting Services Traffic Supervisor Contact: Angelia Fox Traffic Plan Contact: Tehjay Fox
Date: Oct 31st to Nov 4th SHEET # Sheet 1 of 1 Phone: _____ Email: _____	Phone: 604-958-7730 Email: Angelia@StreetwiseTraffic.ca Phone: 604-799-8750 Email: Tehjay@StreetwiseTraffic.ca

LEGEND

	TRAFFIC CONTROL PERSONNEL		TRAFFIC BARREL
	SIGN STAND (TRIPOD)		TUBULAR MARKER - TYPE D
	SIGN STAND (WINDMASTER)		TRAFFIC CONTROL VEHICLE
	SIGN FLAGS		FLASHING ARROW BOARD (FAB)
	CLASS 1 BARRICADE		EXISTING BUS STOP CLOSED
	WORKZONE		RELOCATED BUS STOP

GENERAL NOTES

- All traffic control shall conform to the TCM and the latest editions for Standard Traffic Signs
- Signs shown are representations of signs only and the MOTI Construction Sign Catalogue should be used for detailed sign design
- Dimensions shown are in meters and are the minimums except as otherwise indicated
- All permanent signage that will conflict with this site will be covered or removed while the works are in effect
- Maximum distance between cones/barricades/signs shall be 100m
- Tubular markers and signs will be double based and well secured during windy conditions
- Distances may be adjusted due to urban block length
- These plans are best printed on a tabloid (11x17) page size